

# CHARGEURS PCC

FASHION TECHNOLOGIES

#1

INNER COMPONENT SOLUTIONS & SHIRTING TEXTILES PROVIDER IN THE WORLD

LAINIERE PARIS



ZERO WATER



THE FUSION LINE  
WHERE PERFORMANCE MEETS COMFORT

TISSÉLESS



NATIVA™  
PRECIOUS FIBER

SENFA CILANDER ALUMO



BRENNET

SWISS GHUTRA  
CILANDER

[www.chargeurs-pcc.com](http://www.chargeurs-pcc.com)



CHARGEURS PCC

# Who we are

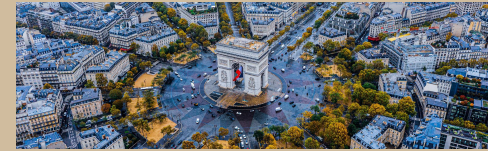




Chargeurs is a world leader in its niche markets operating in



Chargeurs  
Personal Goods



CHARGEURS PCC  
FASHION TECHNOLOGIES



Shirting

Coating

Protection



# CHARGEURS

## 150 Years of entrepreneurial spirit.

**1872**

Chargeurs is born of globalisation and commercialisation through the transport of goods.

**1972**

Chargeurs merges with Lainière de Picardie (created in 1903).

**1981**

The majority of the Pricel group is acquired. Pricel was founded in 1961 by the Gillet family.

**1988**

Chargeurs absorbed the trading, combing and fabric business of Prouvost (founded in 1851).

**2017**

Creation of NATIVA, a label that guarantees the quality and traceability of wool fibers across the whole value chain, from the farm, where sheep are raised and sheared, to the garments manufactured by fashion brands.

**2015**

Michaël Fribourg extends the Group's history by modernizing its business lines, expanding their global leadership while launching new business activities.

**1995**

Senfa, an Alsatian company (founded in 1970) joins the Group.

**2018**

Acquisitions of Leach (founded in 1891), British leader in visual communication. Acquisition of PCC Interlining, an innovation leader in the United States and Asia in performance materials and technical interlinings.

**2020**

Creation of two new business lines: Chargeurs Museum Solutions (World leader in museography) and Chargeurs Healthcare Solutions (Leading player in healthcare protection and wellness).

**2021**

Acquisition of Swaine, the UK's leading luxury goods company, which now includes the emblematic brands Swaine Adeney, Brigg and Herbert Johnson, all with more than 270 years experience in the industry.

**2024**

Acquisition of strategic assets from the Swiss group Cilander, founded in 1814, including shirting textile brands Alumo, Brennet, Eugster & Huber and Swiss Ghutra. Merge of Swiss and French coating, military and nautical expertise with Senfa Cilander including the Planofil brand.



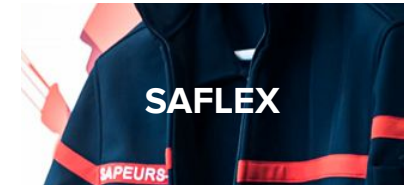
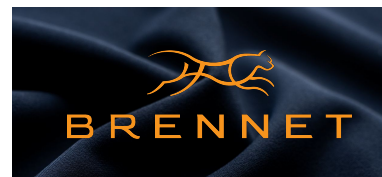
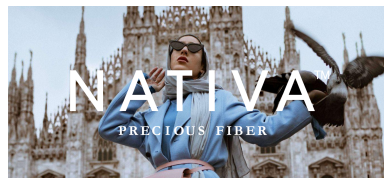
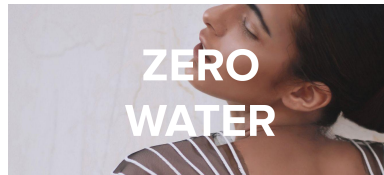
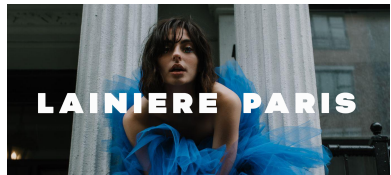
# CHARGEURS PCC

FASHION TECHNOLOGIES

Interlinings  
& inner components

Shirting

Coating



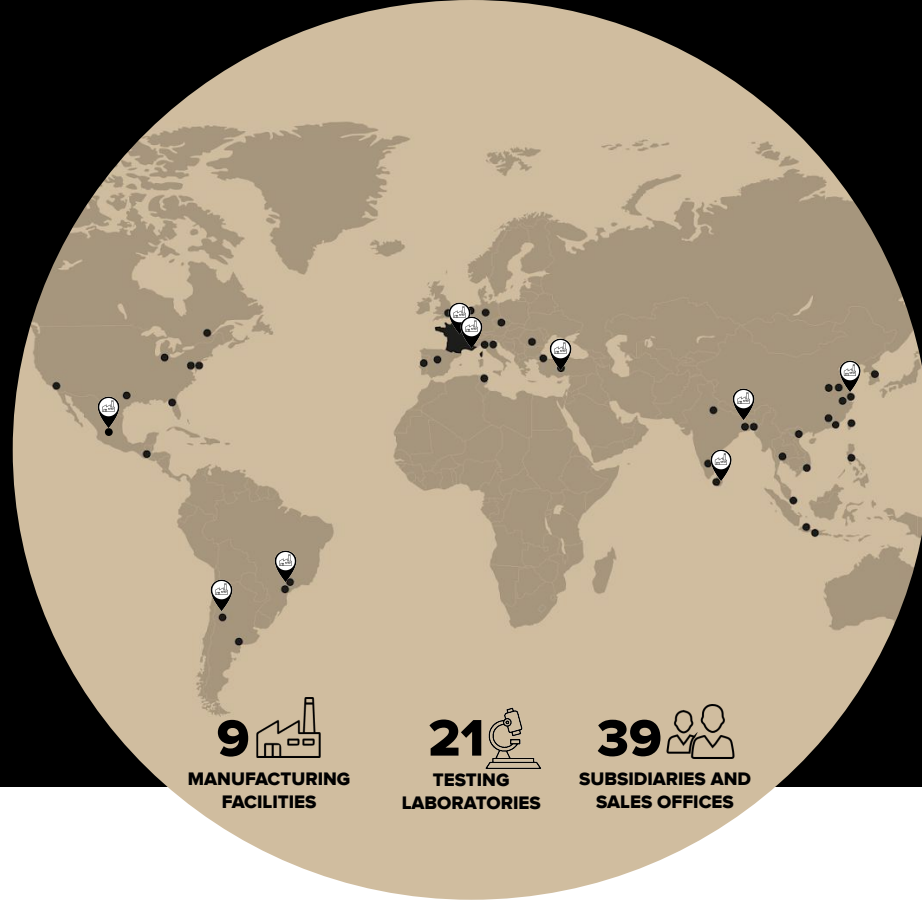
**Chargeurs  
PCC**





# #1

Chargeurs PCC is the world's largest apparel interlinings and inner components manufacturer.



## +7000

customers trust us

## 350M

meters of interlining sold every year

## +90


countries served by our services



# EMEA coverage

**13** 

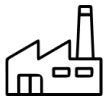
**SUBSIDIARIES AND SALES OFFICES**

**5** 

**TESTING LABORATORIES**

**6** 

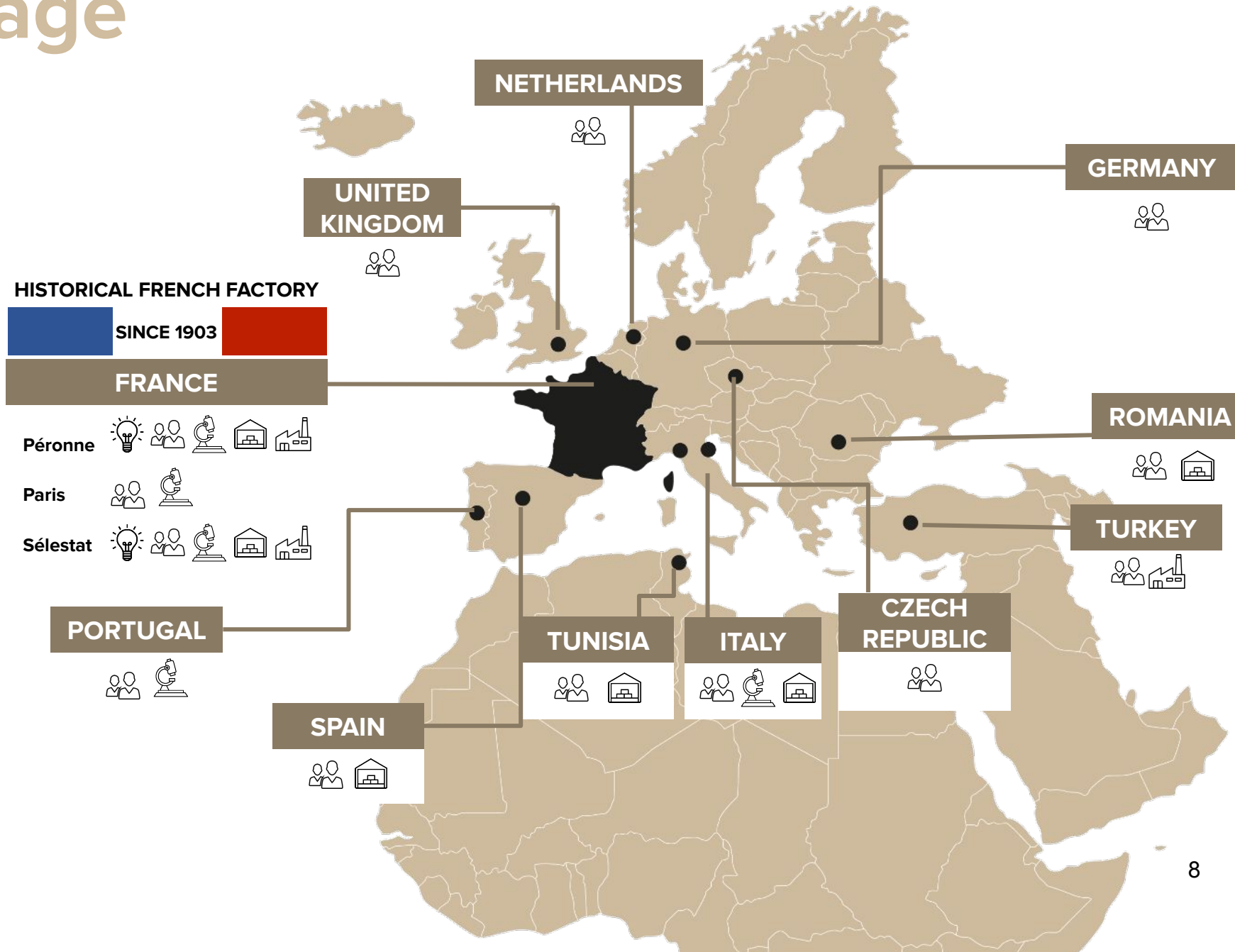
**WAREHOUSES**

**3** 

**MANUFACTURING FACILITIES**

**2** 

**INNOVATION STUDIO**





# Asian coverage

**19** 

**SUBSIDIARIES AND SALES OFFICES**

**14** 

**TESTING LABORATORIES**

**14** 

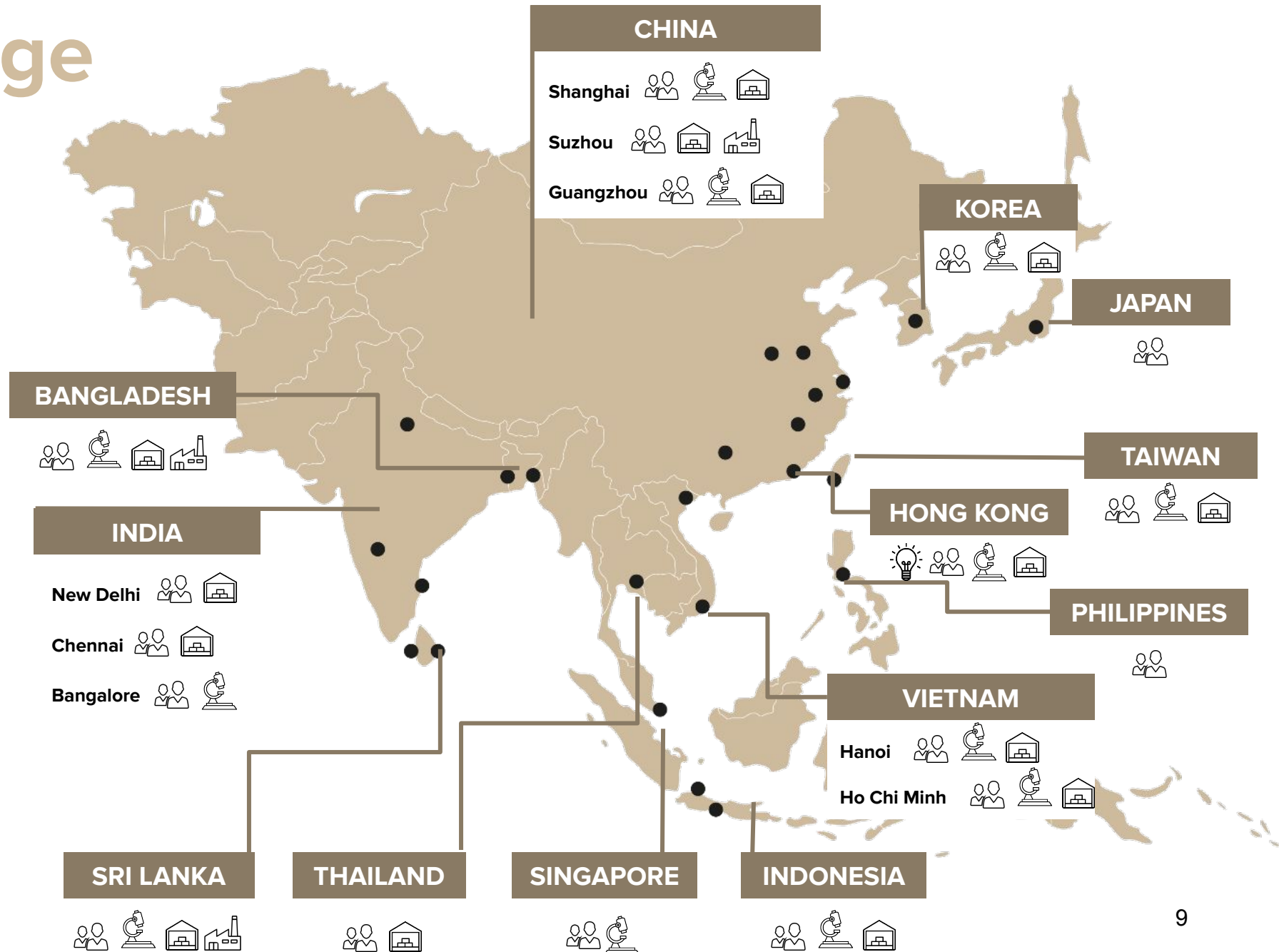
**WAREHOUSES**

**3** 

**MANUFACTURING FACILITIES**

**1** 

**INNOVATION STUDIO**



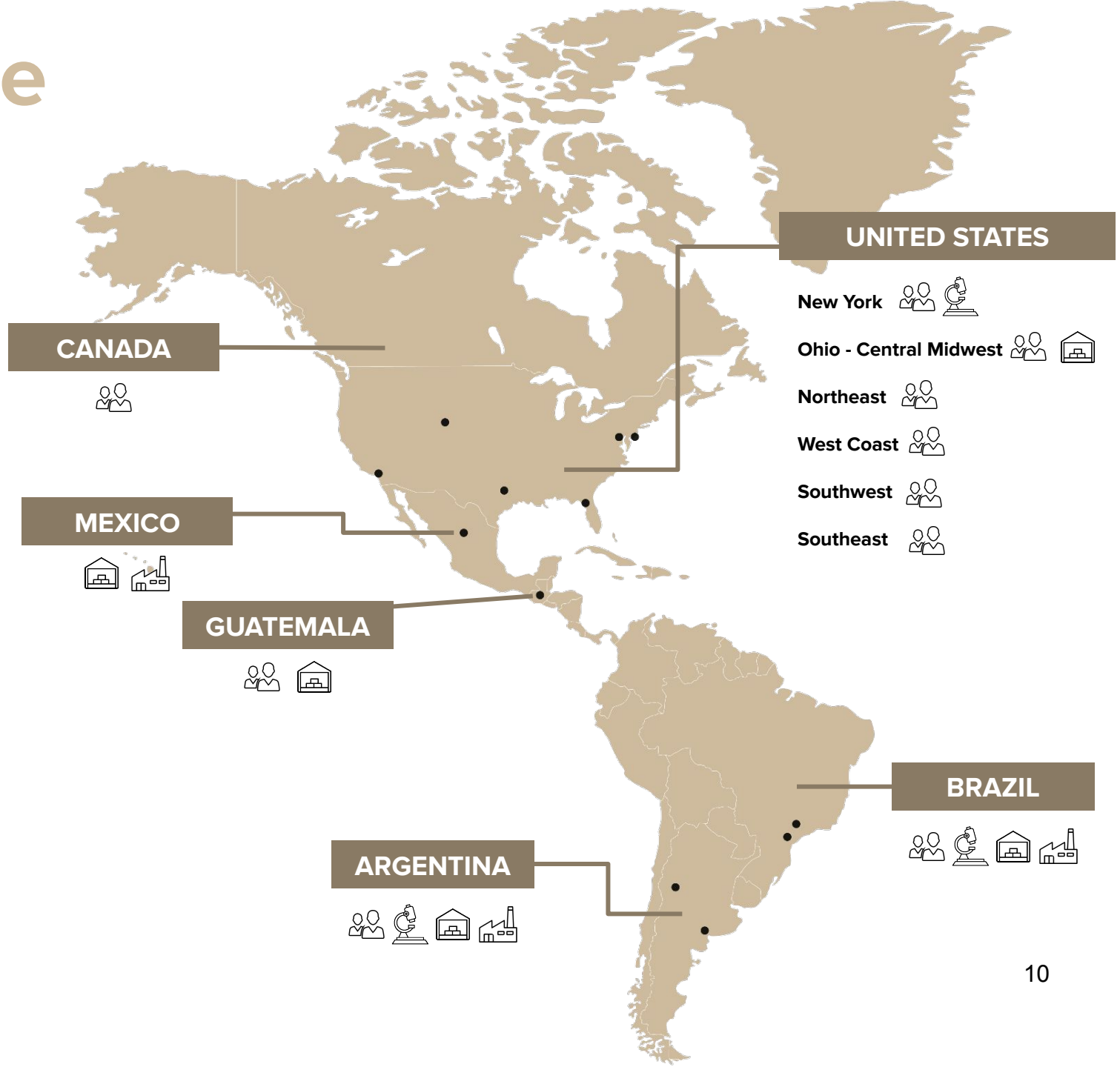
# Americas coverage

**10**   
**SUBSIDIARIES AND SALES OFFICES**

**3**   
**TESTING LABORATORIES**

**7**   
**WAREHOUSES**

**3**   
**MANUFACTURING FACILITIES**





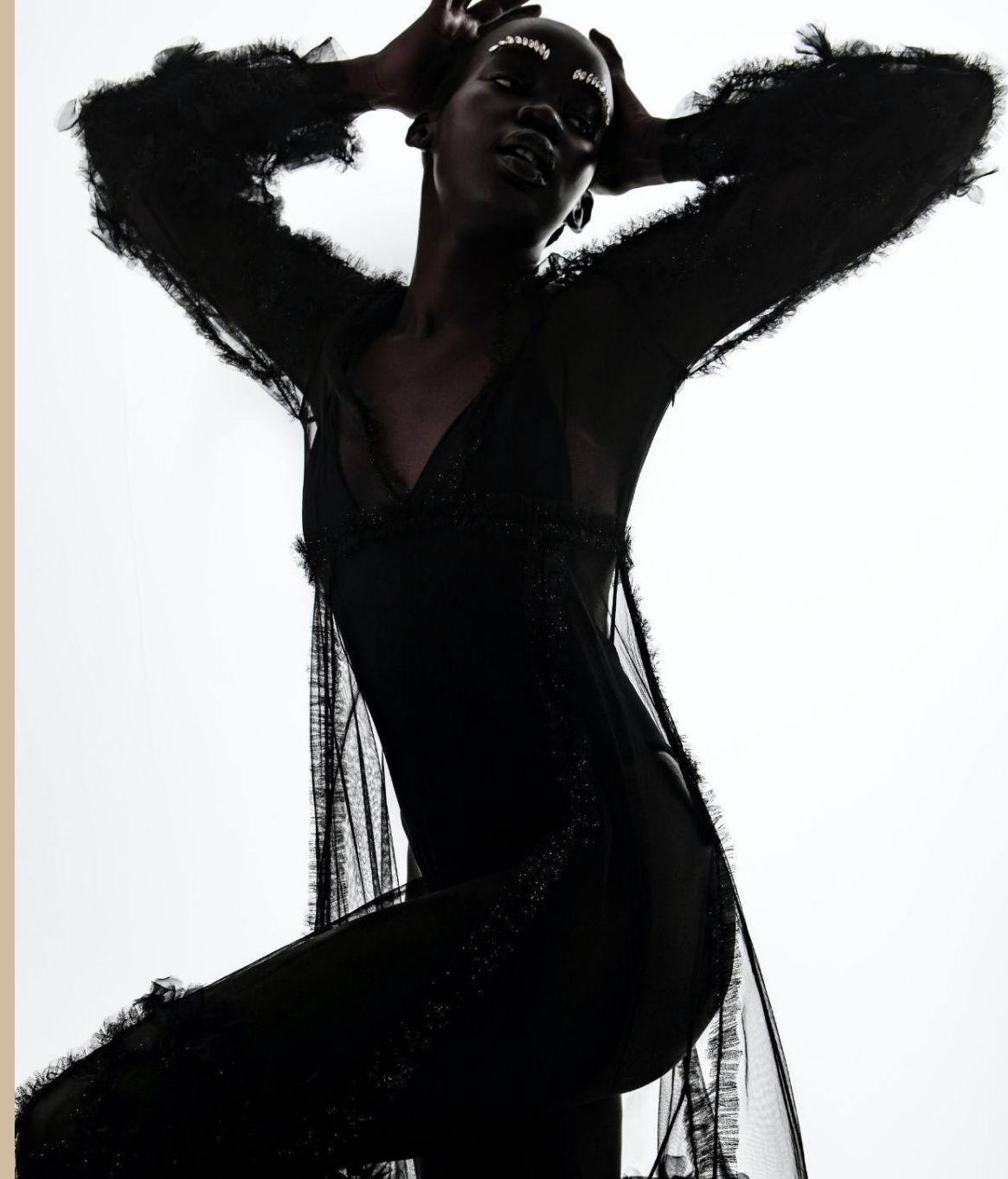
# The soul of any garment

An interlining is the vital and functional layer of textile used between two outer and inner layers of fabric in a garment to impart:

STRENGTH  
SUPPORT  
STABILITY  
SHAPE RETENTION

whilst improving:

AESTHETIC APPEAL  
LONGEVITY  
PERFORMANCE



ADD BODY PREVENT CREASING PREVENT SEATING ADD DRAPE ADD DENSITY CREATE SKELETON PREVENT RIDGES

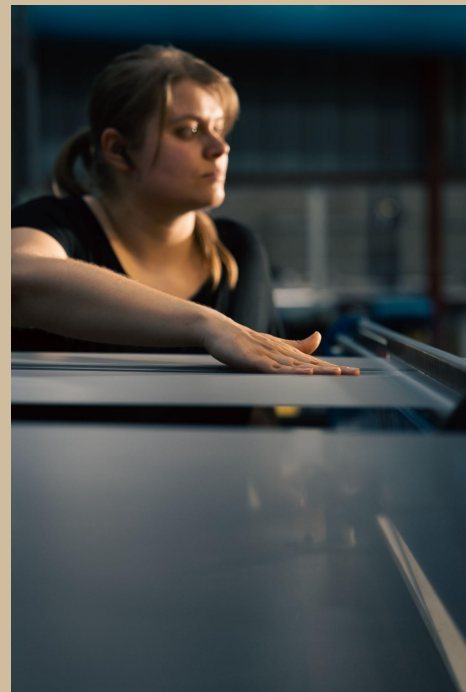
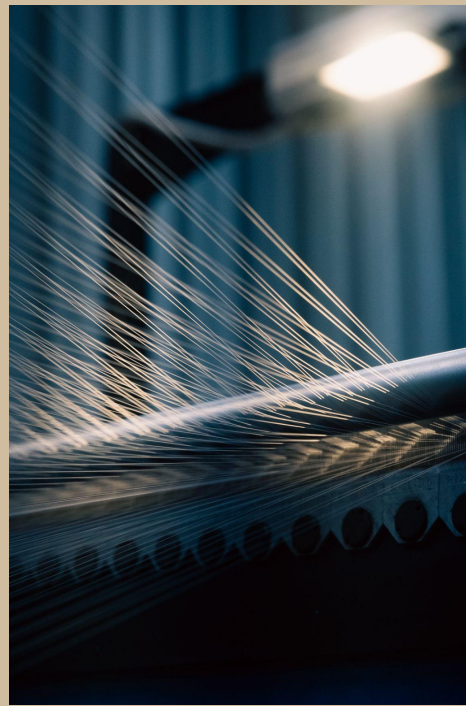
# Always & everywhere

The best worldwide interlining player

- 24/7 service supporting vendors always & everywhere
- 80% of products managed in stock
- 48hrs availability from order to shipping
- Supply chain process guaranteeing sustainability & traceability
- Committed to making an impact on the environment







MADE IN FRANCE

# A french savoir-faire.

## Lainière de Picardie:

Our Historical French Factory since 1903. Two hours away from Paris, our factory Lainière de Picardie produces a wide range of interlinings which are , knitted and coated under the supervision of our textile and chemical experts. We produce inner components for all European production, reducing the carbon footprint created by moving materials.



Lainière de Picardie video

[Chargeurs PCC | Made in France - Lainière de Picardie factory](#)

CHARGEURS PCC

# Our Inno- vati- ons





# Digital initiatives.

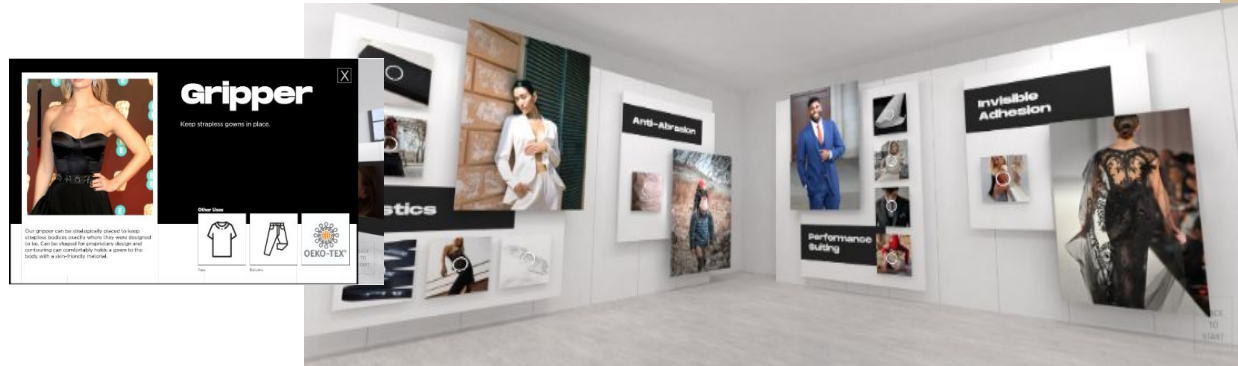
The fashion industry produces 150 Billion garments per year 30% of it is never sold (45 Billion)

We are the only inner component maker to partner with a 3D design software company to offer designers digital interlinings.

Result:

- Speed time to market
- Reduce waste and resource usage
- Eliminate the need to create and ship as many physical samples

## • The Fusion Line Virtual Showroom.



Provides customers round-the-clock access to products interactively and links to CLO 3D marketplace

## • Our Digital Inner Component Library.



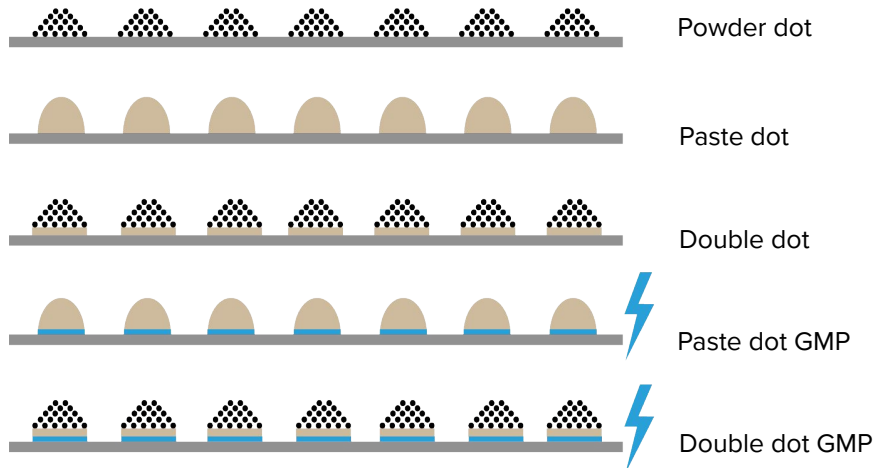
The Modern Way to Reduce Waste in Design.



# GMP.

Global Molecular Point (GMP) is a patented coating solution ensuring optimum adhesion to a wide range of application thanks to an electronical beam.

## Different coating technologies:



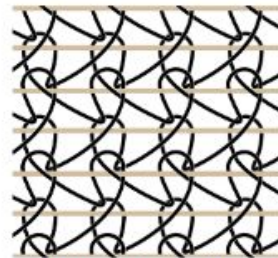
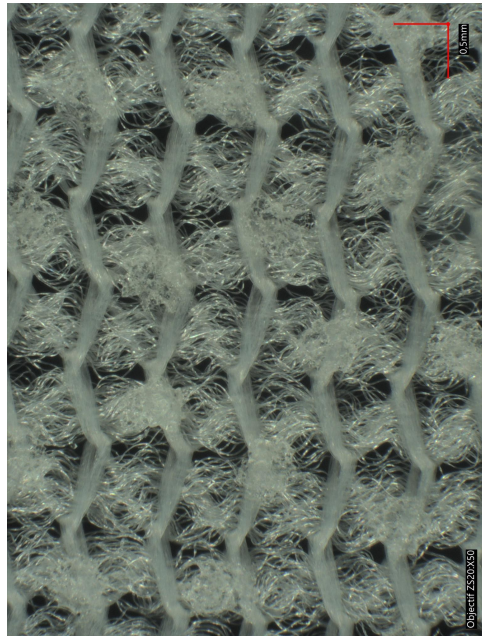
- Avoid strike back
- Bond strength twice stronger
- Preserve Fabric Flexibility
- Multiple Application
- Ideal stability over time



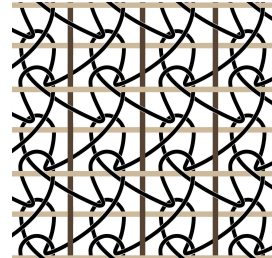


# Weft inserted.

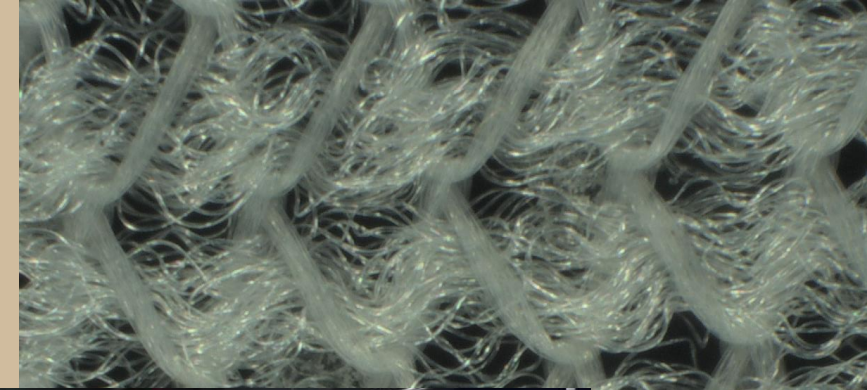
From the extremely light knitted interlining destined to sheerest outer fabric, to thick interlining for heavy fabrics as coats and jackets, this technology fits to the market trends. This innovation allows a superior quality with a notable resilience in weft direction and a high stability and control in warp direction.



INSERTION TRAME  
(Weft inserted)



TOP SATIN cabestan  
(fil non tricoté)





# Zero Water.

## **The world's first ultralight sustainable knitted inner components which uses no water in the dyeing process**

Sustainable color for a full range of interlining qualities, including Dreamlight, the lightest knitted interlining in the world. Our innovative process requires no water in the dyeing process, maintains flexibility, and improves the adhesion performance. These silky and soft qualities will be invisible under your light and sheer fabrics; the perfect match to your fine outer fabrics.

- First and only product on the market
- 2,6 liters of water saved in average per linear meter (150cm)
- Made in France
- Washable up to 40°C
- Cold wash → improves sustainability
- Available in 15 colors
- MOQ as low as 300 meters
- Quick delivery time
- Improved adhesion

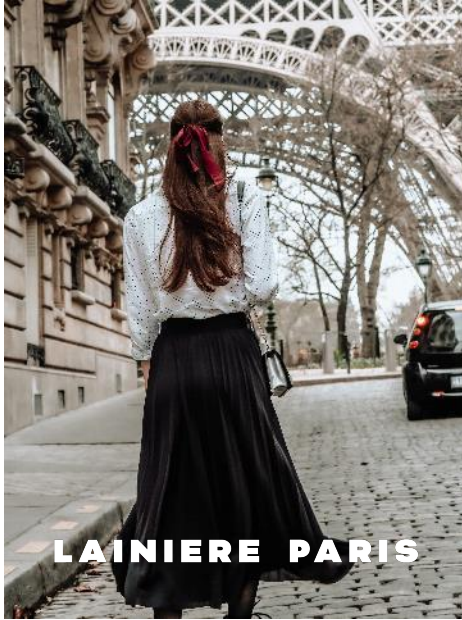




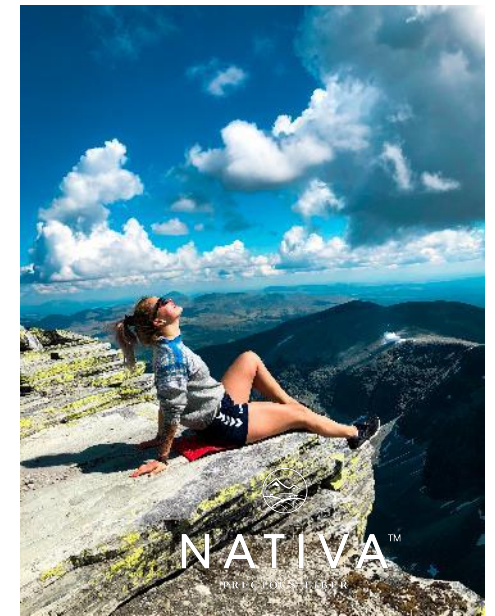
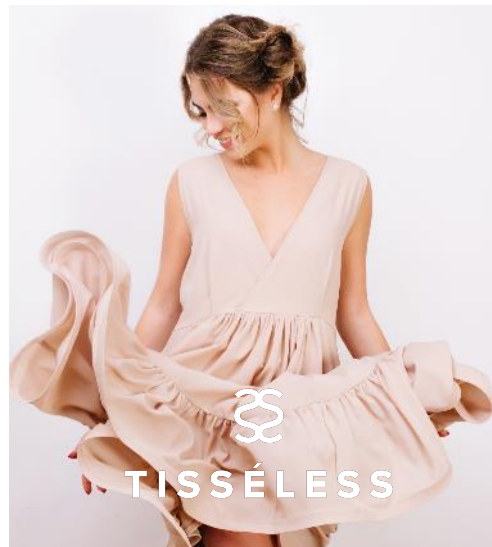
CHARGEURS PCC

# Our Collections





# Our collections





# LAINIERE PARIS

## UNDERLINE ELEGANCE.

**More than a century of expertise** in the womenswear Haute Couture through our historical French factory of Lainière de Picardie. Nowadays, Lainière Paris places its entire expertise, **know-how and permanent innovation capacity** at the service of all the major Fashion players throughout the world.

Our collection features 3 main product ranges:

### Dreamlight

- Almost invisible interlinings
- Exclusivity of the world's finest interlinings in PA gauge 40
- For transparent & lightweight fabrics

### Classic tailoring

- Classic warp knitted weft inserted fabrics
- For medium heavy and non-transparent outer materials
- Features also declinated in a specific woven range

### Top satin

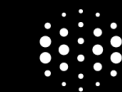
- Textured, closed-mesh, bi-stretch interlinings
- Featuring opacity and volume
- Providing the perfect handfeel
- For structured garments
- Features also declinated in a specific woven range



Made in France



Haute Couture



GMP

GMP





# TISSÉLESS

## UNPARALLELED PERFORMANCE AND COMFORT.

Chargeurs PCC's excellence in non-woven technology started in 1972.

Chargeurs PCC's collection of non-wovens offering:

- Unparalleled performance
- Comfort
- High performance for the adhesion and durability
- GMP coating

Three categories of products are present in this Collection:

- **Gold:** perfect to reinforce clothes that do not require dry cleaning.
- **Platinum:** guaranteeing resistance to post-dyeing and to dry cleaning.
- **Diamond:** includes our GMP technology and by definition offers very safe performances, from the application to the durability of the garment



High  
Performance



Compliant with  
our Standard



GMP

GMP



Garment Dyed



# SUSTAINABLE 360™

## FULL-CIRCLE COMMITMENT.

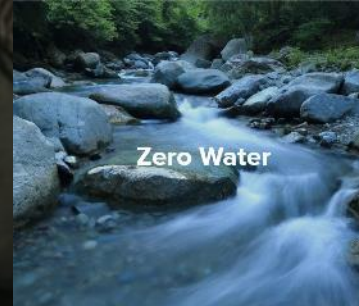
Better products start by caring about people. Doing right by humans also means doing right by the world. We are constantly reducing our carbon footprint and reducing waste. We operate by the highest environmental standards in all our territories.

Raw materials creating a positive impact with:

- less water
- less insecticides
- more bio-based ingredients
- more recycled ingredients

Available in:

- Natural Materials
- Recycled Materials
- Made in France range





# ZERO WATER

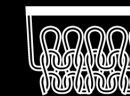
**The world's first ultralight sustainable knitted inner components which uses no water in the dyeing process, available in a rainbow of colors.**

Sustainable color for a full range of interlining qualities, including Dreamlight, the lightest knitted interlining in the world, invisible under fabrics.

- First and only product on the market
- 2,6 liters of water saved in average per linear meter (150cm)
- Made in France
- Washable up to 40°C
- Cold wash → improves sustainability
- 15 colors available
- MOQ as low as 300 meters
- Quick delivery time
- Improved adhesion
- Flexibility



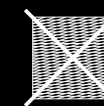
Made in  
France



World Finest  
interlining



Waterless, Reduced  
Energy and GHG  
Processing



Anti-Moiré



Avoid strike-back



Low MOQ





# B E R T E R O

P R E M I U M T A I L O R I N G

## THE SOUL OF THE JACKET.

Bertero was born in 1907 in Vinovo, Italy, and has represented excellence in canvas production for more than 100 years. Bertero continues to be the reference for suiting components for the world's most discerning brands.

- **Best human capital know how** between raw material and final product
- **Tailor made service** for every market request
- **Widest product range** of different weaves
- **Horsehair** in tailored products
- **Pre-made** service for full canvas

Available in:

- Gold
- Diamond – produced in Italy



Canvas



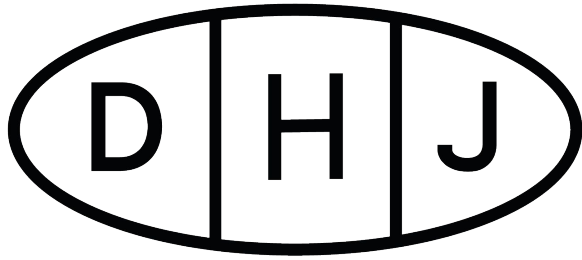
Chest Canvas



Horse Hair



Shoulder Pads



## AT THE CORE OF EVERY QUALITY SHIRT.

Since 1945, DHJ is a renowned manufacturer of shirt interlinings. From standard single layer non-fusible cotton, to complex poly cotton constructions, DHJ are the leading technical experts in shirt interlinings worldwide.

- The **dye cutting collection** developed with the market makes us the best partner to satisfy the style of both men and women
- The range of bases available both in cotton and in stretch fibers today allows **maximum adaptability to the new fabrics on the market**
- All customers have also been able to rely on our **research laboratories for customized tests** on their fabrics
- All cotton bases are **BCI Cotton certified**

Available in:

- Precision comfort collar
- Water soluble woven interlining
- Interlinings for non-iron and wrinkle resistant shirts



Heritage



Shirt interlining



Comfortable  
and soft



Pre cut service





**COMMITMENT TO PERFORMANCE AND INNOVATION THROUGH SUSTAINABILITY AND RESPONSIBILITY.**

Providing the highest performance, this range of sustainable insulation retains loft, thermal retention and allows soft drape.

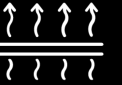
- Fiber blends using **traceable, blockchain-based NATIVA™ wool**
- **Warm, washable insulation**
- **Natural thermoregulation**
- **Odour control**
- **Moisture resistant**
- **Softer hand of wool**

Product categories of the collection.

- NATIVA™ wool
- Thindown + NATIVA™
- Polyester Wadding
- Anti-Migration Film



Warm



Naturally  
Breathable



Recycled plastic  
bottles



**NATIVA™**  
PRECIOUS FIBER



THINDOWN



REPREVE



# THE FUSION LINE

WHERE PERFORMANCE MEETS COMFORT

## THE LINES BETWEEN PERFORMANCE AND COMFORT ARE BLURRING-THERE IS A NEW FUSION.

The Fusion Line introduces high-tech performance materials to new categories like suiting and dresses to keep the traditional aesthetic while bringing unprecedented comfort to the wearer.

- **100+ unique Interlining & Speciality products** provide One Stop Shop Solution from Caps to Bottoms.
- **Performance Films and Elastics** covering from sew-in to Fusible **for the enhancement in Athleisure with comfort** thanks to superior bonding (stretchability/recovery)
- **Cutting edge design of stretch non-woven** brings the revolution of the traditional and yet **functional better fitting garment**.



Bonding Tapes



Seam Sealing Tapes



Overlay Tapes



Power Stretch



Fusible Elastics



Down Proof

CHARGEURS PCC

# Sus- tain- ability





# Our commitment, standards & initiatives

Our sustainable 360 line includes products certified with industry leaders in sustainability and corporate social responsibility.



\*via the Gaia Index Rating. Joined the Gaia Index in 2018, up to 42<sup>nd</sup> out of 230 in 2020. Signed the United Nations (UN) Global Compact in 2017.



LINEN



CUPRO



COTTON



GRS



VISCOSE



# Regulations Reinforcement

## Companies

Reporting  
Due Diligence



Deforestation -  
Free Products regulation



Corporate Sustainability  
Reporting Directive -  
CSR



Corporate  
Sustainability due  
Diligence  
Reporting Directive

2023

2024

2025

2026

2027

## Products

Transparency  
Eco-conception



AGEC law, Anti-waste  
and Circular Economy



Etichettatura ambientale  
- Packaging



Resilience and  
Climate law  
- Affichage  
environnemental



Product Environmental  
Footprint PEF



Digital Product  
Passport - DPP



CHARGEURS PCC

# Our Collabo- rations





# NATIVA™

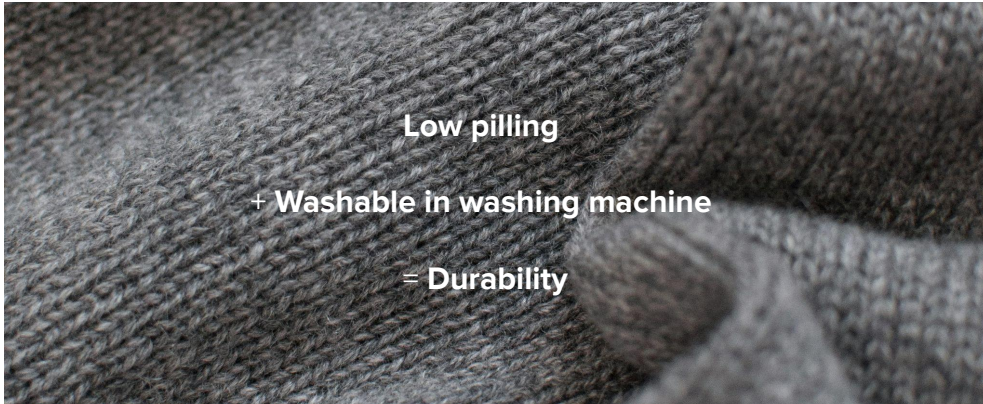
PRECIOUS FIBER

## FULLY TRACEABLE FIBERS

NATIVA™ was launched by Chargeurs Luxury Materials, the world's leader in luxury combed wool.

NATIVA™ brings nature-focused solutions to brands and supply chain partners, centered in 100% traceable natural fibers **like wool, cotton and cashmere**, backed by **Blockchain technology**. Through the NATIVA™ Protocol, we guarantee high standards on **animal welfare, land management/environmental** practices and CSR, making our protocol the most demanding one. We **guarantee full farm to brand transparency**.

## NATIVA EXTREME SUSTAINABLE SWEATER



Low pilling

+ Washable in washing machine

= Durability



Animal welfare



Land management



Corporate social responsibility



Certification



Natural & Renewable



Naturally Degradable



Ethical Sourcing



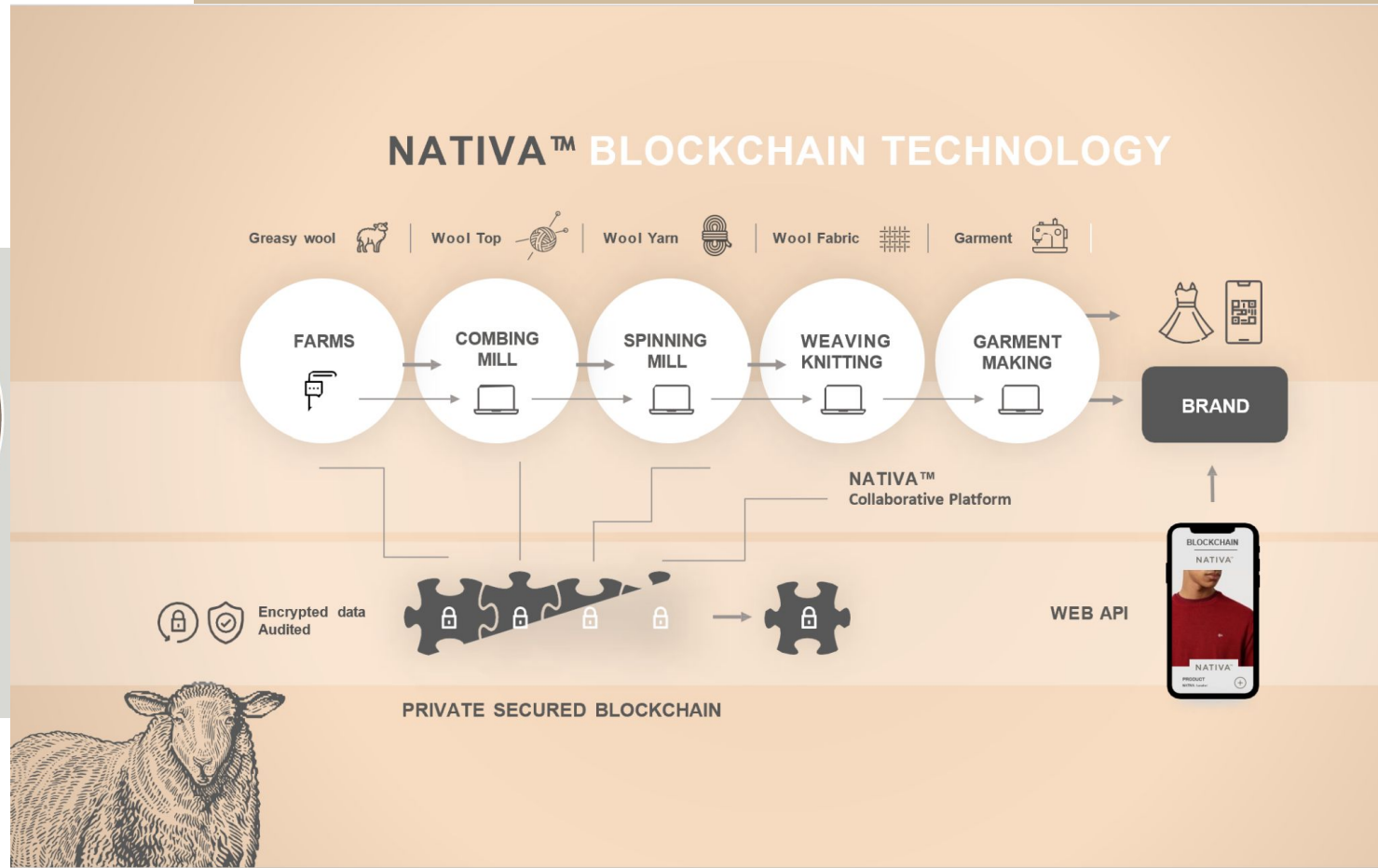
Verified Origin



Fully Traceable



# Fully supply chain traceability



## WHAT IS THINDOWN

### THINDOWN® IS THE WORLD'S FIRST REAL DOWN FABRIC

Natural, light, warm, breathable and environmental-friendly.  
Made in Italy and globally patented by Nipi (Natural Insulation Products Inc).  
Our technology insulates the garments and gears of the leading international brands.  
Nature enhanced through technology, since 2015.



## WHY THINDOWN® IS THE BEST INSULATION FOR YOUR GARMENTS

THINDOWN® offers all the natural advantages of down in the smallest profile.

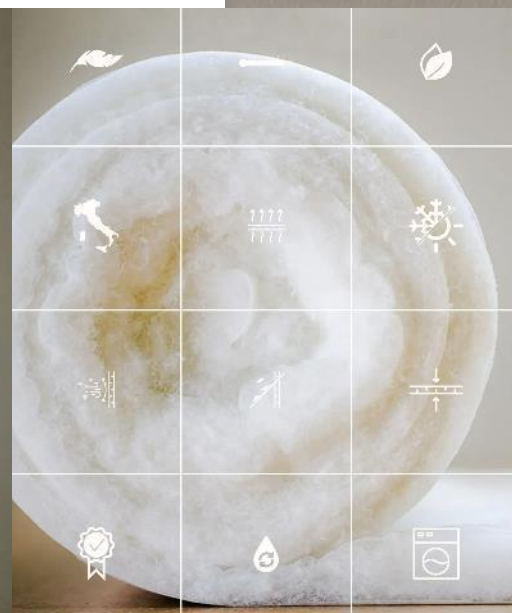
Lightweight, soft and breathable, the exclusive fabric provides uniform protection and maintains the ideal body temperature in any environmental condition.

Suitable to insulate any garment: duvet jackets, blazers, sweatshirts, gloves, footwear, THINDOWN® releases the creativity.

Independent laboratory tests have proved THINDOWN® to be 2 times warmer than loose down and 4 times warmer than polyester.

THINDOWN® is natural and eco-sustainable, made exclusively with traced down, RDS certified (Responsible Down Standard) or post-consumer recycled down, GRS certified (Global Recycled Standard).

A unique, patented and totally Made in Italy product.



THINDOWN  
+  
NATIVA™  
PRECIOUS FIBER

RECYCLED  
DOWN &  
TRACEABLE  
WOOL

THINDOWN



# Shirting Division



# Swiss excellence meets French savoir-faire

The Shirting Division combines 4 brands: **Alumo**, **Eugster & Huber**, **Brennet** and **Swiss Ghutra**.

Alumo and Eugster & Huber focus on **top luxury menswear and womenswear**, while Brennet targets more price-sensitive markets, offering **dynamic and competitively priced fabrics**. This dual approach ensures the division serves both **high-end and premium fashion segments**.

**Swiss Ghutra** is specialized in Arabic traditional wear.




## ALUMO

- World leader in **luxury cotton fabrics** with unmatched quality standards.
- Targeting **sartorial and luxury brands**.



EUGSTER & HUBER™  
1860

- 
- Specialists in **luxury pleated fabrics**, voiles, and jacquards for **ceremonial fashion**.
  - Serving the **luxury womenswear** segment.



BRENNET

- 
- Renowned for its **innovative, high-performance fabrics** like non-iron and natural stretch.
  - Targeting **premium brands** focused on innovation.



SENFA CILANDER

# Our Coating division



Senfa and Cilander, two industry leaders with rich histories in coating and textile finishing, have merged their expertise to form **Senfa Cilander**. This merger creates a powerful entity in the textile industry, offering a wide range of specialized solutions across various markets. With Senfa's deep knowledge of French coating technologies and Cilander's renowned Swiss coating and finishing, the combination allows for enhanced innovation and performance.

---

### Senfa

- **Established:** 1973
- **Expertise:** French coating
- **Main Factory:** Sélestat, France

### Cilander

- **Established:** 1568
  - **Expertise:** Swiss tactile finishing
  - **Main Factory:** Lützelflüh, Switzerland
- 

**Senfa Cilander**, established in 2024, merges French coating excellence with Swiss finishing precision.

Both bringing together the additional brands:

### SAFLEX

Specializes in finished garment for workwear, military applications, fire departments etc. - advanced interlayer solutions for laminates and glass.

### PLANOFIL®

Provides tarpaulins for diverse cover applications, known for extreme lightness, robustness, and durability.

### CILANDER MILITARY

Tech for military



**Merci!**

**The soul of any garment**

**CHARGEURS PCC**